

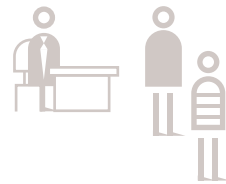
WHOLE OF COMMUNITY APPROACH

R4P PROGRAM COMPONENTS



RESEARCH & LEARNING

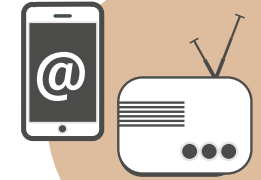
- Generate knowledge on dynamics of violent extremism
- Promote a network of local CVE researchers
- Create opportunities for learning exchanges



*Inform action
on what
matters*

GOVERNANCE

- Foster trust between population and government authorities
- Improve perceptions of government services
- Strengthen early warning and early action mechanisms
- Facilitate inclusion of the Fulani community
- Prevent gender-based violence



MEDIA

- Prevent the spread of fake news and hate speech
- Increase radio shows in local languages to prevent violent extremism
- Sponsor a network of social media influencers

*Amplify
outreach
of action*

R4P COMMUNITY ACTIONS

- Increase literacy skills
- Support village loans and saving associations
- Promote entrepreneurship skills
- Provide vocational training

LIVELIHOODS



OBJECTIVE



- Strengthen community resilience against violent extremism



NATURAL RESOURCE MANAGEMENT

- Facilitate inclusive governance of water points
- Mediate herder-farmer conflicts
- Promote legal artisanal gold mining
- Facilitate women's access to land

